

**Khodiyar**  
**Enterprise**



## **Khodiyar Enterprise**

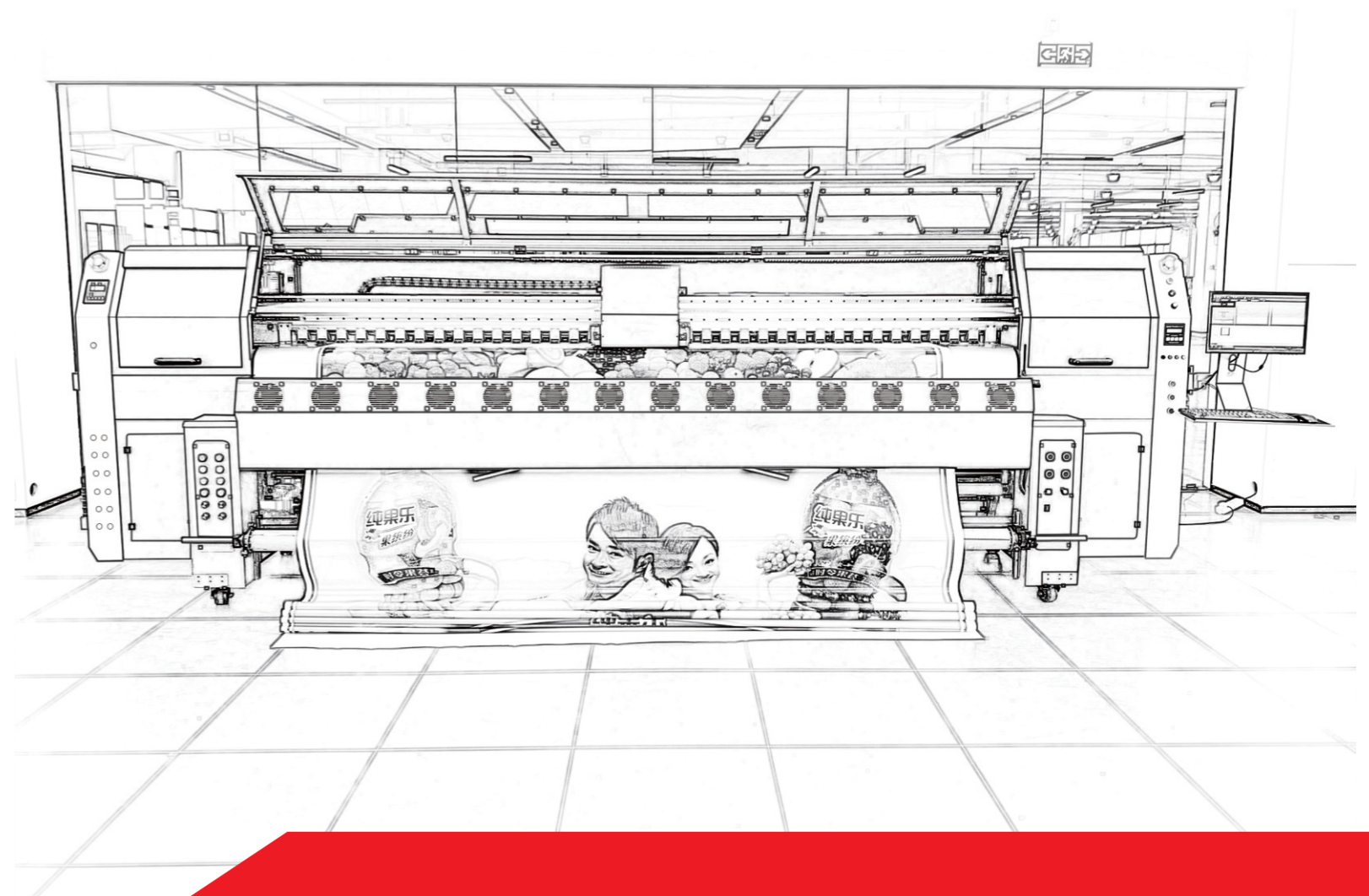
**Office Add : Sumel 7, Near Soni ni Chal, Odhav,  
Ahmedabad, Gujarat, India. 382415**

**Contact Person : Jaymin Patel**

**Mobile : +91 9925007279, +91 9428111642**

**E-mail : [khodiyar.enterprise@hotmail.com](mailto:khodiyar.enterprise@hotmail.com)**

**Website : [www.keprinters.com](http://www.keprinters.com)**



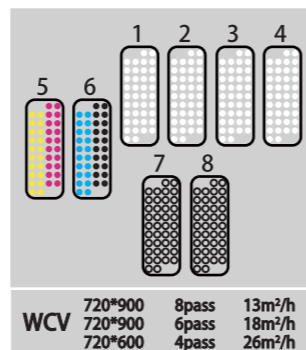
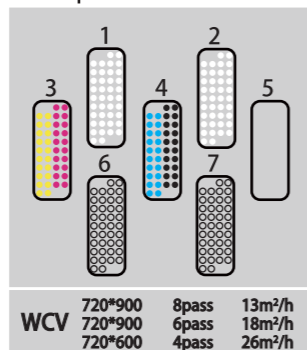
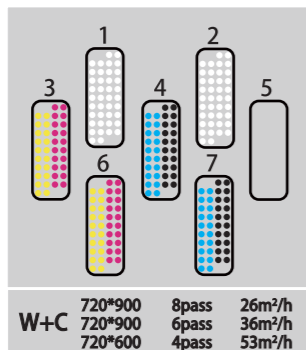
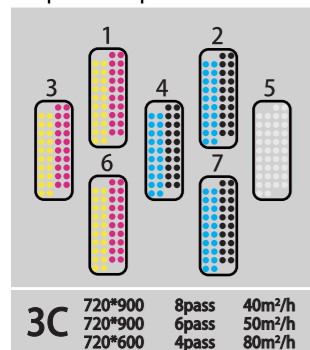


Mode 1:  
Full CMYK  
Speed up to 75 sqm/h  
CWC mode  
Speed 18 sqm/h

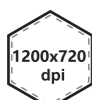
Mode 2:  
White&CMYK  
Most popular mode  
Speed up to 50 sqm/h

Mode 3:  
White&CMYK&Varnish  
Wall Paper Favourite  
Mode Speed up to  
18 sqm/h

Mode 4:  
Super Thickness For Wall  
Paper Printing  
18 sqm/h



Piezoelectric nozzle  
压电喷头



High Resolution  
高精度



Drop  
墨滴大小



White ink  
白墨



USB3.0



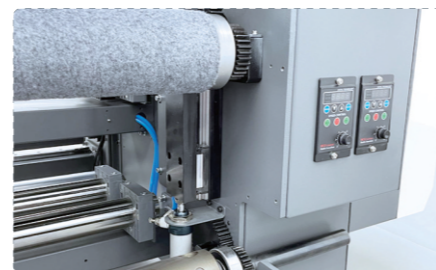
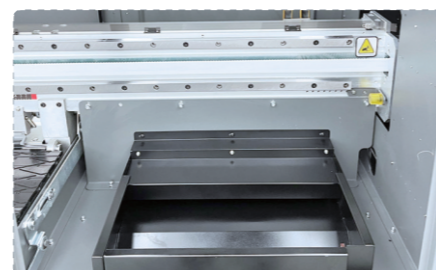
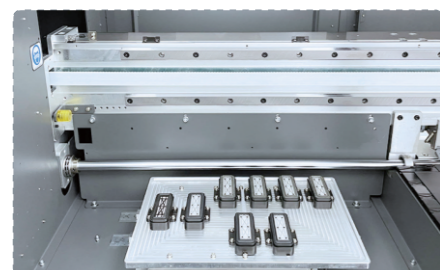
Long life  
寿命长



Automatic Cleaning  
自动清洗



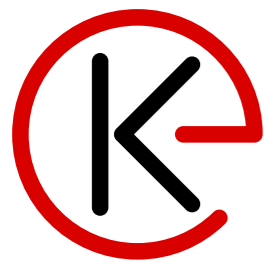
Stable Printing  
高稳定



**Specification**

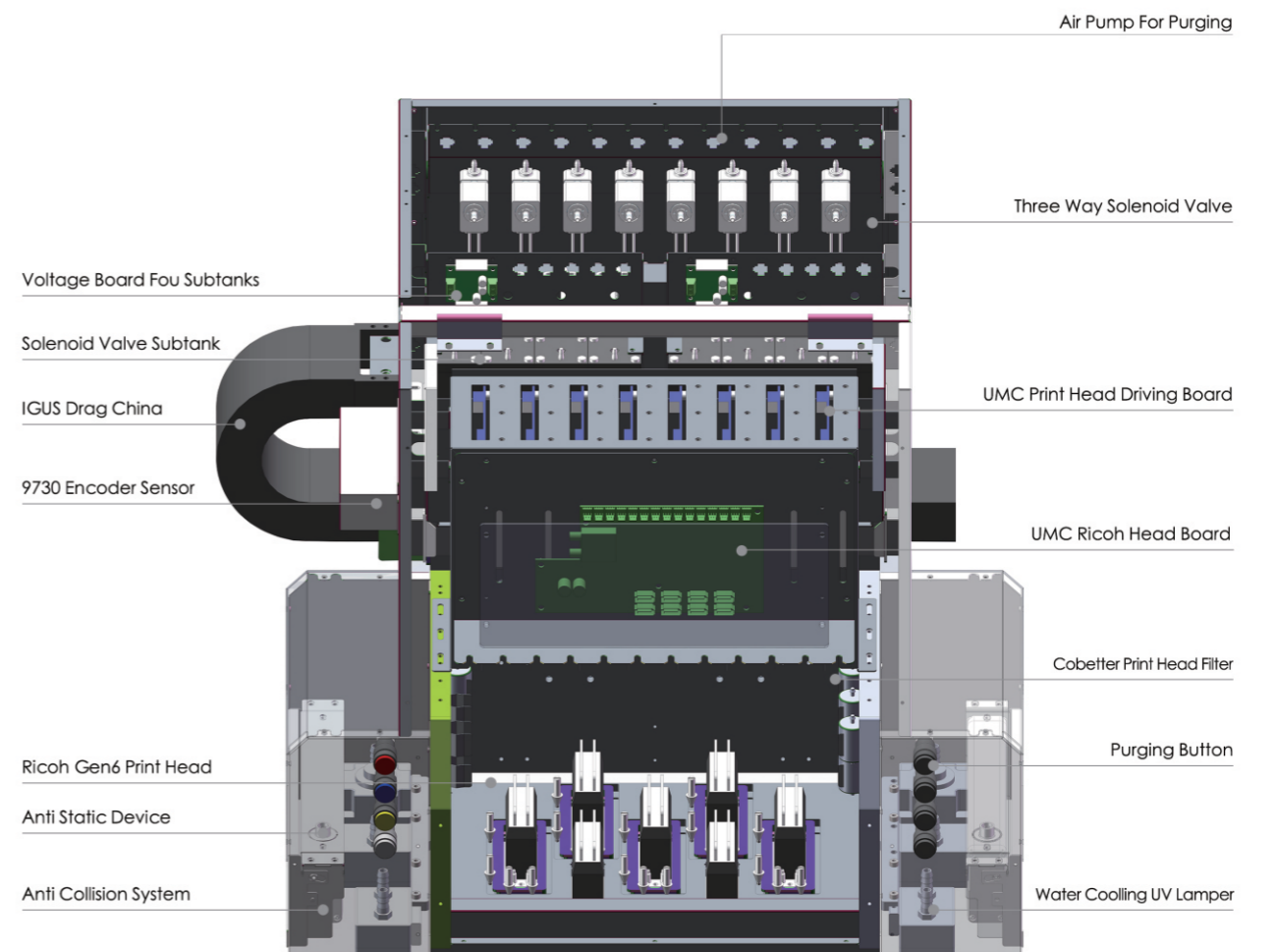
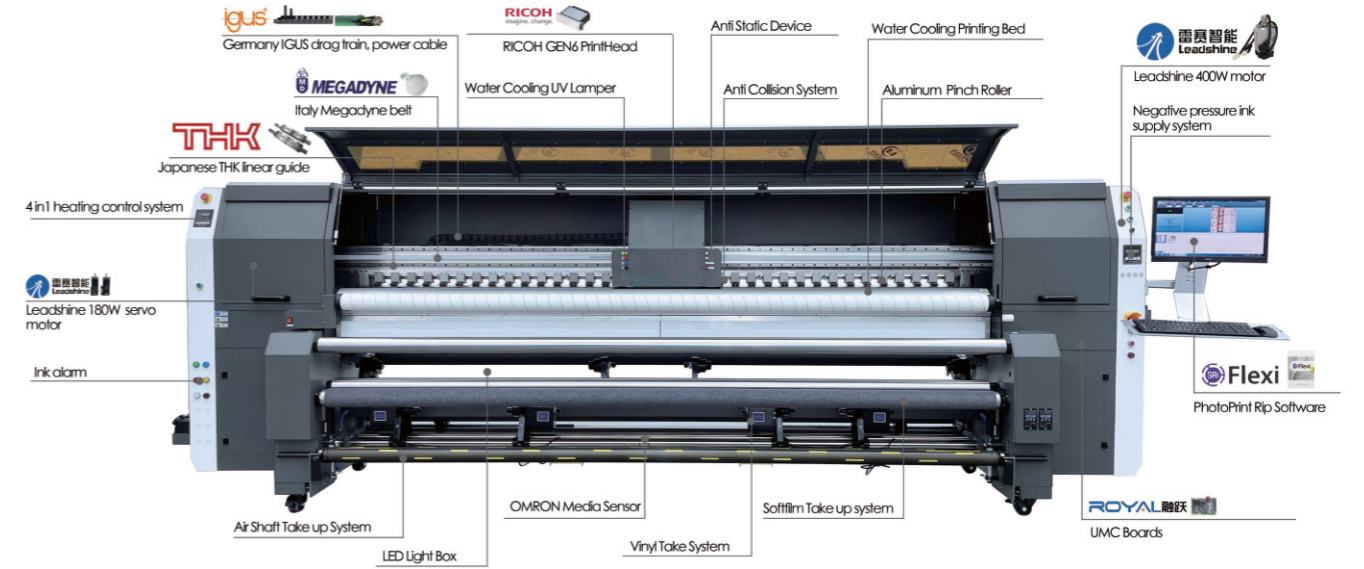
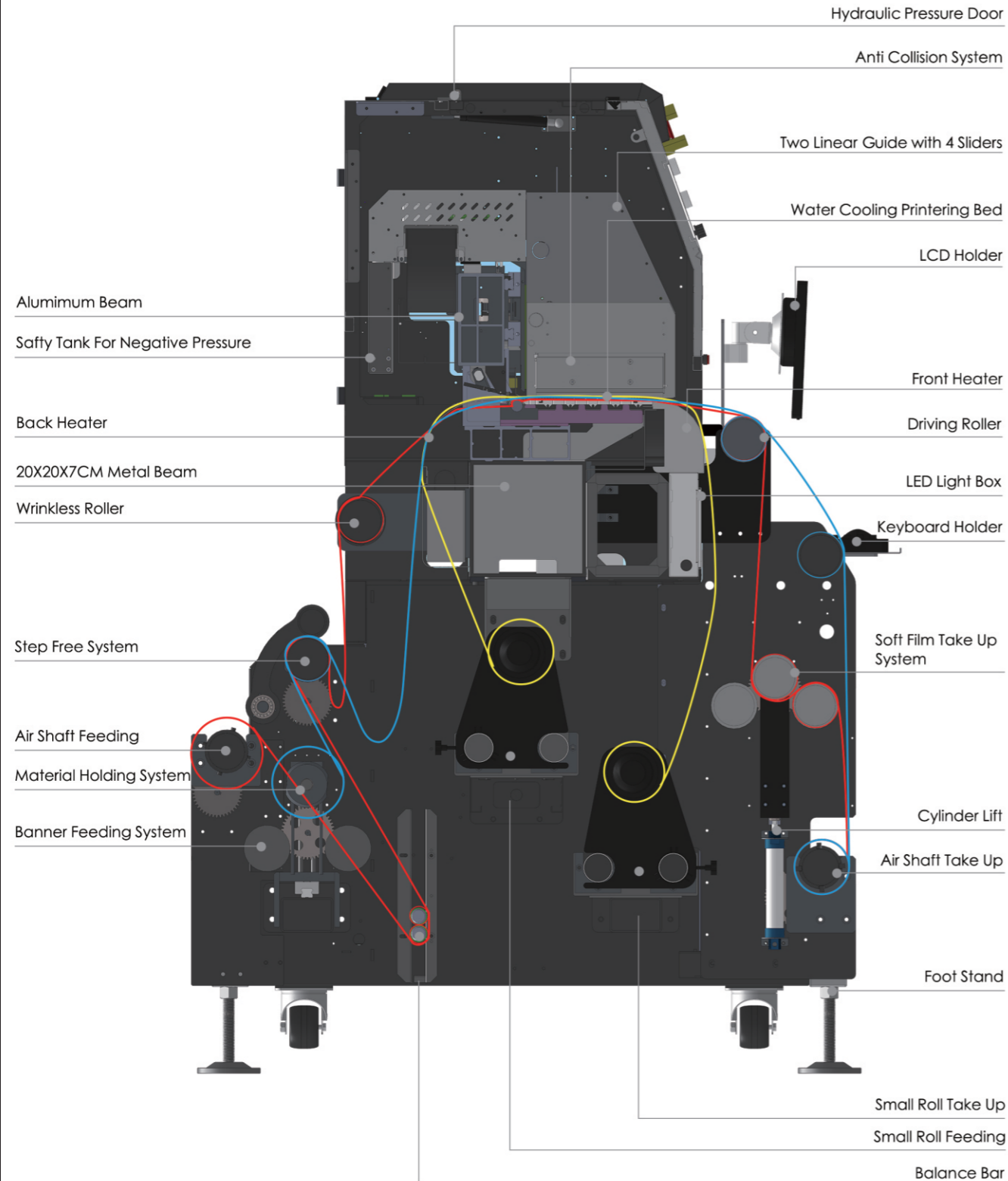
<b>Boards&amp; RIP</b> 板卡和软件	Boards(板卡) Password(加密) Rip Software(RIP软件) LCD&Key board Bracket(显示器键盘支架) Main Girder Structure(支撑主梁) Y-Axis(Y轴) Beam(运动横梁)	UMC Boards(上海融跃) Dongle 36 Stages(加密狗36期) PhotoPRINT UV Rip Software(美国PP软件) ● Aluminium LCD &Key board bracket(铝合金显示器键盘支架) 20*20*7mm Square Tube(20*20*7厘米方管) 20mm Diameter(20毫米主轴) 4600mm Aluminum Beam(4.6米铝合金横梁)
<b>Body</b> 机架	Linear Guide Way(导轨) Pinch Roller(压轮) Printing Bed(打印平台) Printing Bed Suction System(吸风) LED lighting System(平台LED) Carriage Belt(皮带) Carriage Chain(拖链) Carriage Data Cable(数据线) Carriage Power Cable(电源线) Carriage Encoder (光栅解码器)	● Double THK linear guide way With Four Blocks(双THK导轨) 36 PCS High Precision Aluminum Made Pinch Roller(36个铝合金压轮) 225mm Wide Printing Bed With Water cooling system(225水冷循环矩阵台板) Adjustable Vacuum Suction System(可调吸风) Printing Bed Lighting System(平台LED照明) Italy MEGADYNE Belt(意大利麦高迪皮带) Germany Igus Drag Chain(德国IGUS拖链) Fiber Optical(光纤) Germany Igus Power Cable(德国IGUS高柔电缆) 180DPI(9730) Manual Screw type(手动螺杆式) Anti Collision System(防撞挡片) ● Carriage Anti-Static bar(静电消除器) Unique Printhead Protection Stack(半自动保温)
<b>Carriage</b> 小车	Carriage Lifting(升降) Carriage Protection(防撞) Carriage Anti-Static(防静电) Carriage Capping(保温) X Driving Mode(X轴电机) Y Driving Mode(Y轴电机) XY Motor Bracket(电机支架)	● Leadshine 400W AC Servo Motor With Reduction Gear Box (雷赛400瓦交流伺服减速机) Leadshine 180W DC Servo Motor with belt and Gear(雷赛180瓦) Aluminum Machined Brackets(铝合金支架) 3600mm Step-Free Feeding System(3.6米宽幅无阻尼放料系统) Black&White Detect sensor(黑白布感应探头)
<b>Motor</b> 电机	Roll Material Feeding System(放料) Feeding&Take up Sensor(光电开关) Material Holding System(材料固定)	● Big Roll Material Holding System(导轨式材料固定系统) ● Softfilm Feeding&Take Up System(软膜收放料系统) ● Air Shaft Feeding System(Optional)(气胀轴放料) ● Air Shaft Take Up System(Optional)(气胀轴收料)
<b>F&amp;T</b> 收放料	Softfilm Feeding&Take Up System(软膜收放料) Air Shaft Feeding System(气胀轴放料) Air Shaft Take Up System(气胀轴收料) Vinyl Feeding&Take up System(车贴收放料) Anti Shake Leveling Stand(防抖) Air pressure System(供墨压力) Subtank(二级墨盒) Ink Pump(墨泵)	● Double roll &Single Motor(双卷收放) Metal Leveling Stand(金属地撑) Double Negative pressure system(双路负压) ● Solenoid valve Subtank 8 PCS(电磁阀墨瓶8个) SPD Air Pump(赛普达空气泵) SPD Ink Pump(赛普达墨泵)
<b>Ink Supply</b> 供墨	Magnetic Valve(电磁阀) Tube Connector(墨管接头) Ink Supply Alarm System(墨路报警) Airtank Alarm System(气瓶报警) Ink Purging System(压墨) Ink flash Control system(防飞墨) Ink Refilling bottle with sensor(主墨桶) Drying System(干燥)	Anti-Solvent 3 way Magnetic Valve(可过墨水的三通电磁阀) Americian ValuePlastics Tube Connector(美国微露墨管接头) Build in Boards & Showing in Software(板卡自带) Built on Carriage LED & Beep(小车自带) Individual Ink Purging System(小车自带分色压墨) Suction Type Waste Ink Tank(带吸风的闪喷箱) 1.5L Capacity with Sensor(1.5L带液位报警)KCMYW LED UV Curing With Water Cooling System(LED冷温固化) 4 in 1 Heating Control Panel(四合一温控仪) Rear Cover-Front Cover(后罩壳-前罩壳) Subtank Heater(直流24V加热片)
<b>Heating &amp;Drying</b> 加热和烘干	Heating Control Pane(加热控制) Heating System(加热系统) Subtank Heater(二级墨盒加热) Forklift Location Bracket(叉车支架) Printer Name Plate(铭牌) Printer Size(机器尺寸)L*W*H	Subtank Heater(直流24V加热片) Forklift Location Bracket(黄色叉车位支架) Alumimuml Name Plate with CE certification(铝制铭牌) 5000*1070*1565 Wooden Box,Custom Suffocating Free. (免熏蒸出口木箱) 1110KGS/1260KGS 5300*1150*1950 None(无) 2PCS/4PCS
<b>Packing</b> 包装	Printer Packing(包装) N.W.(净重)/G.W.(毛重) Intergrated packing size(整机打包尺寸) Split packingsize(拆分打包尺寸) 20GP/40HQ	





**Khodiyar  
Enterprise**

KHODIYAR ENTERPRISE

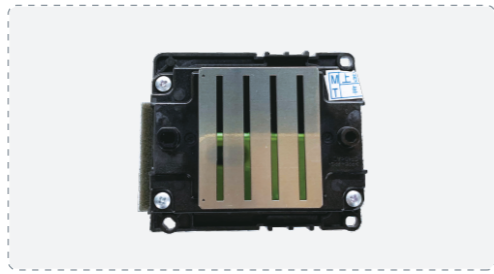
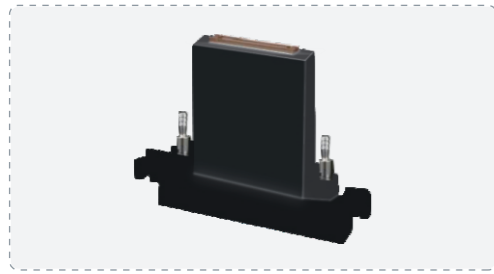


KHODIYAR ENTERPRISE



Add: F12-13, Sumel 7, Near Soni ni Chal, Odhav, Ahmedabad, Gujarat, India  
Tel: +91 99250 07279 E-mail: [khodiyar.enterprise@hotmail.com](mailto:khodiyar.enterprise@hotmail.com)

Scan and visit our website.



i - i3200/4720



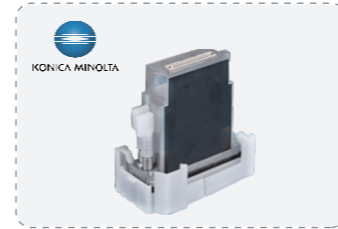
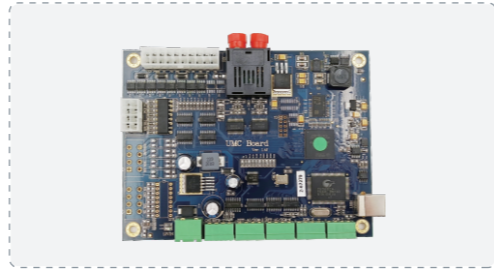
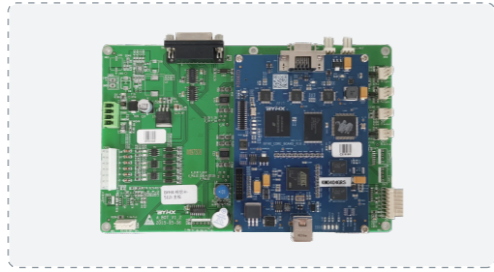
F - F1440/DX5



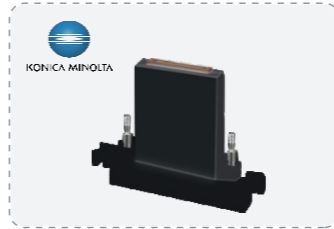
G57 - RICOH G5 7PL



G65 - RICOH G6 5PL



K14 - KONICA 512 14pl  
K42 - KONICA 512 42pl



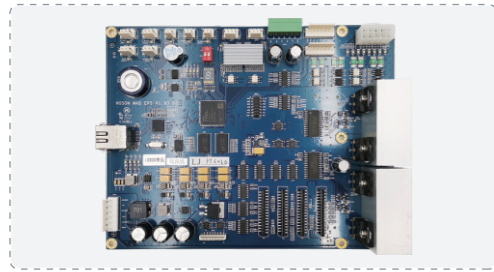
i06 - KONICA 512i 06pl  
i30 - KONICA 512i 30pl



I13 - KONICA 1024i 13pl  
I30 - KONICA 1024i 30pl



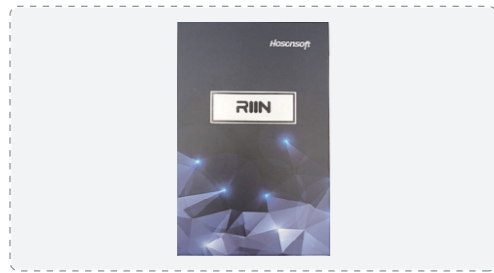
S10 - SG1024-10PL  
S25 - SG1024-25PL



EP



A



S



# **Khodiyar Enterprise**

**Office Add : Sumel 7, Near Soni ni Chal, Odhav,  
Ahmedabad, Gujarat, India. 382415**

**Contact Person : Jaymin Patel**

**Mobile : +91 9925007279, +91 9428111642**

**E-mail : [khodiyar.enterprise@hotmail.com](mailto:khodiyar.enterprise@hotmail.com)**

**Website : [www.keprinters.com](http://www.keprinters.com)**